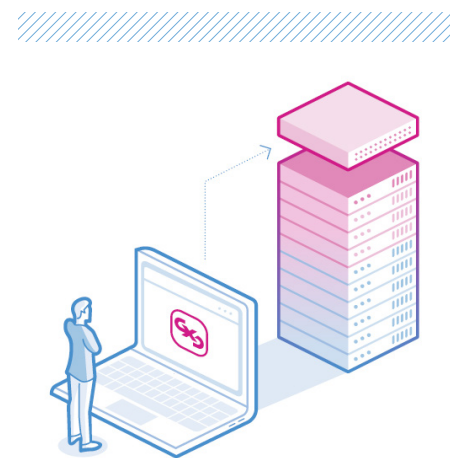




CXD Compute Nodes

Node Types and Configuration Options

Compute Nodes are the fundamental building blocks of Cyxtera's on-demand infrastructure service. Each node is a pre-configured hardware unit, dedicated to your environment. Designed to meet a broad range of workload needs, our menu of On-demand Compute options include HPE Bare Metal and Nutanix hyperconverged infrastructure (HCI) appliances in a variety of configurations with varying number of cores, quantity of RAM, and type and number of storage drives.



BARE METAL - HEWLETT PACKARD ENTERPRISE PROLIANT DL 300 SERIES SERVERS

Node Models	Description	No. Cores	CPU Speed (GHz)	RAM (GB)	Storage HDD (TB)	Storage SSD (TB)
HPE0	HPE DL325 Gen 10 – AMD 7281	16	2.1	128	2.0	0.2
HPE1	HPE DL360 (Hybrid) – Intel Silver 4208	16	2.1	256	8.0	3.8
HPE2	HPE DL360 (Hybrid) – Intel Silver 4214	24	2.2	512	8.0	3.8
HPE3	HPE DL360 (All Flash) – Intel Gold 6246	24	3.3	768	-	11.5
HPE4	HPE DL380 (Hybrid) – Intel Gold 5218	28	2.3	768	48.0	3.8

NUTANIX APPLIANCES

Node Modes	Description	No. Cores	CPU Speed (GHz)	RAM (GB)	Storage HDD (TB)	Storage SSD (TB)
NTX0	NX-1065-G6 (Hybrid) – Silver 4114	20	2.2	128	16.0	1.9
NTX1	NX-3060-G6 (Hybrid) – Silver 4116	24	2.1	256	8.0	3.8
NTX2.2	NX-3060-G6 (Hybrid) – Silver 4116	24	2.1	512	8.0	3.8
NTX3.2	NX-3060-G6 (All Flash) – Gold 5120	28	2.2	512	-	11.5
NTX4	NX-8155-G6 (Hybrid) – Gold 6148	40	2.4	768	48.0	7.7
NTX5	NX-8035-G6 (Hybrid) – Silver 4116	24	2.1	512	32.0	3.8