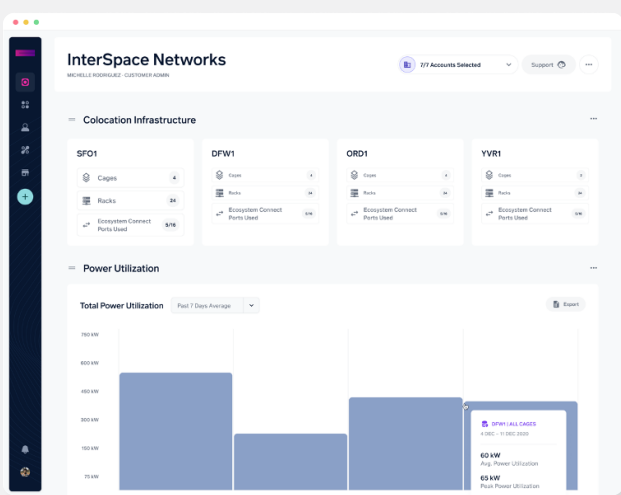


# The Cyxtera Portal

Monitor, manage, and control your infrastructure from a single dedicated platform.



Overview

With the Cyxtera portal, you can get closer to the data center than ever before.

In response to evolving global business demands, enterprises have embraced an increasingly distributed approach to infrastructure in order to leverage compute, connectivity, and storage as near to their customers as possible. IT and operations staff must now monitor and manage their assets and operations across multiple sites, and they need full visibility into the complete data center environment from anywhere, at any time. For these teams, supervising their distributed infrastructure in-person can be costly, complex, and difficult to manage.

Designed to solve these challenges, the Cyxtera portal offers a powerful and intuitive suite of tools for remote data center management. Our API-driven, modern platform allows for control, automation, and real-time visibility into your entire data center environment. These capabilities help you simplify your operations, reduce costs, and accelerate your workflows—all while supporting the needs of remote, distributed teams.



### Accelerate your time-to-market

Achieve your business goals faster with access to everything you need in one place—including real-time data, hardware configuration, maintenance tasks, and personnel management.



### Maximize control

Operate your remote infrastructure with unmatched visibility into the data center environment and a full suite of tools for monitoring and management, greatly reducing the need for staff on the ground.



### Simplify operations

Intelligently automate recurring tasks, or even entire workflows. Onboard new staff, audit assets, and use our powerful API to seamlessly synchronize data across systems.

### A view for everything

Mobile-friendly, interactive dashboards simplify monitoring and management within a single-pane view. And, any dashboard, from asset manifests to visitor logs, can be converted to a custom report and exported with a single click.

### Full control

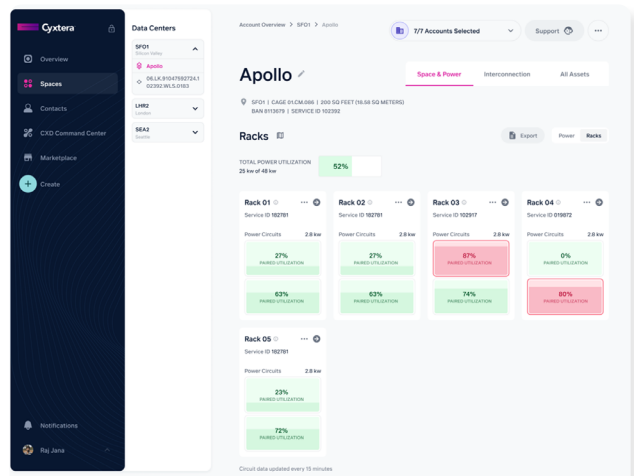
With tools to configure hardware, handle maintenance, and manage personnel, you can now control all your data center operations from one place. Our contact management suite has been optimized for the needs of enterprises, making it easy for administrators to manage the specific and diverse permissions for large teams across multiple sites.

### Rapid access to the interconnection ecosystem

Seamlessly provision low-latency, direct connections to a marketplace of network and technology service providers. Instantly see the available service providers in your data center locations and order new connections directly from within the portal.

### Intelligent automation

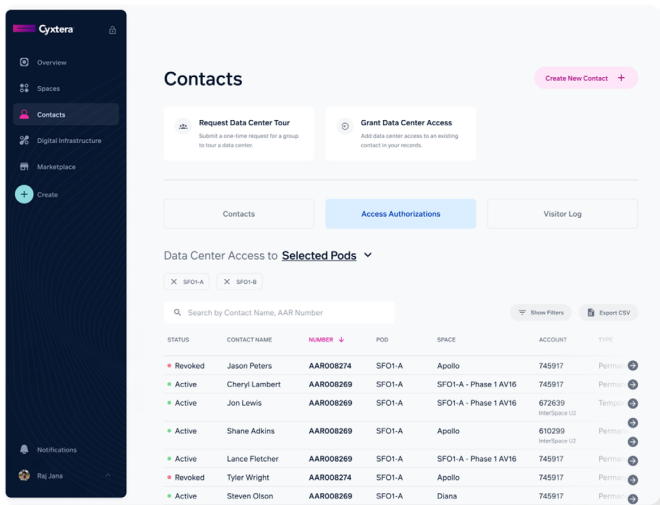
REST API-driven architecture lets you see live changes in your data center environment, from hardware updates to real-time usage. And with access to any system through code, you can seamlessly integrate any data or automate any workflow.



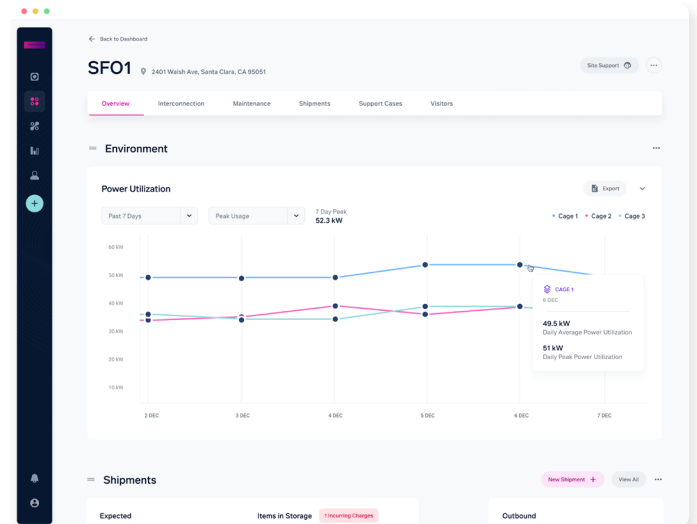
Cage Overview

### Features

- Detailed, interactive dashboards for every site and asset
- Mobile-friendly and device-agnostic UI
- Live and historical power utilization graphs for data centers, racks, and individual circuits
- Detailed interconnection inventory and service provider marketplace
- Automated, customizable reports and data export
- Personnel and access management for multiple sites
- Shipment tracking and handling
- Built-in support and maintenance helpdesk
- Integrated billing, invoices, and ordering
- REST API access to any data or tool, for custom integrations and automation



Contacts



Power Use Graph

Visit [cyxtera.com/portal](https://cyxtera.com/portal) for more information.